



EUROPEAN  
PROPERTY  
AWARDS  
DEVELOPMENT



ROLLS-ROYCE  
MOTOR CARS  
AUTHORISED DEALER  
P&A WOOD



BEST RESIDENTIAL HIGH  
RISE DEVELOPMENT  
CYPRUS

Limassol Blu Marine  
by Leptos Estates

2021-2022



LIMASSOL

**BLU MARINE**

EUROPE'S NEW RIVIERA

Apartment 1304 / 3 Bedroom  
Poseidon Tower



LIMASSOL

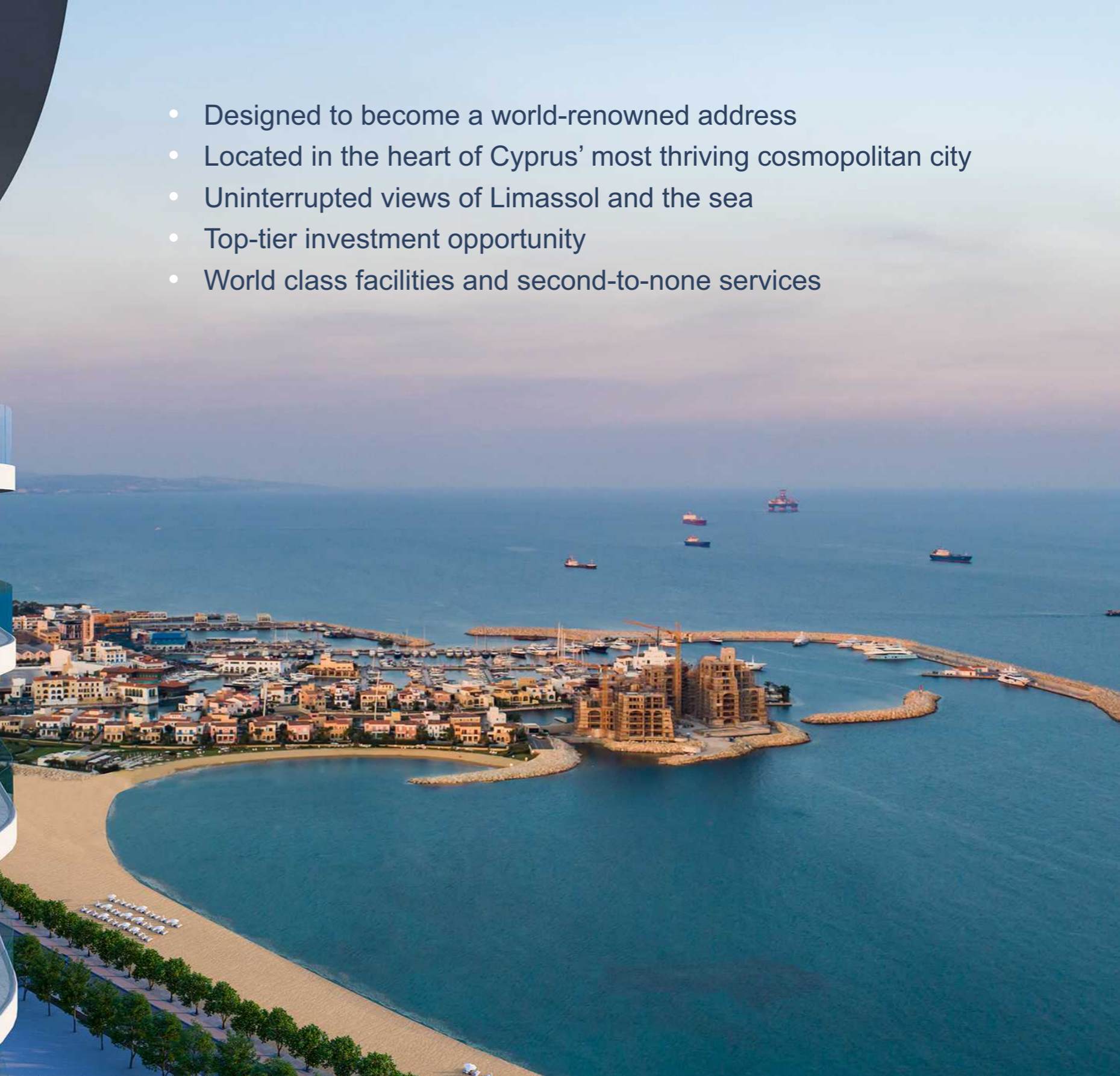
# BLU MARINE

EUROPE'S NEW RIVIERA





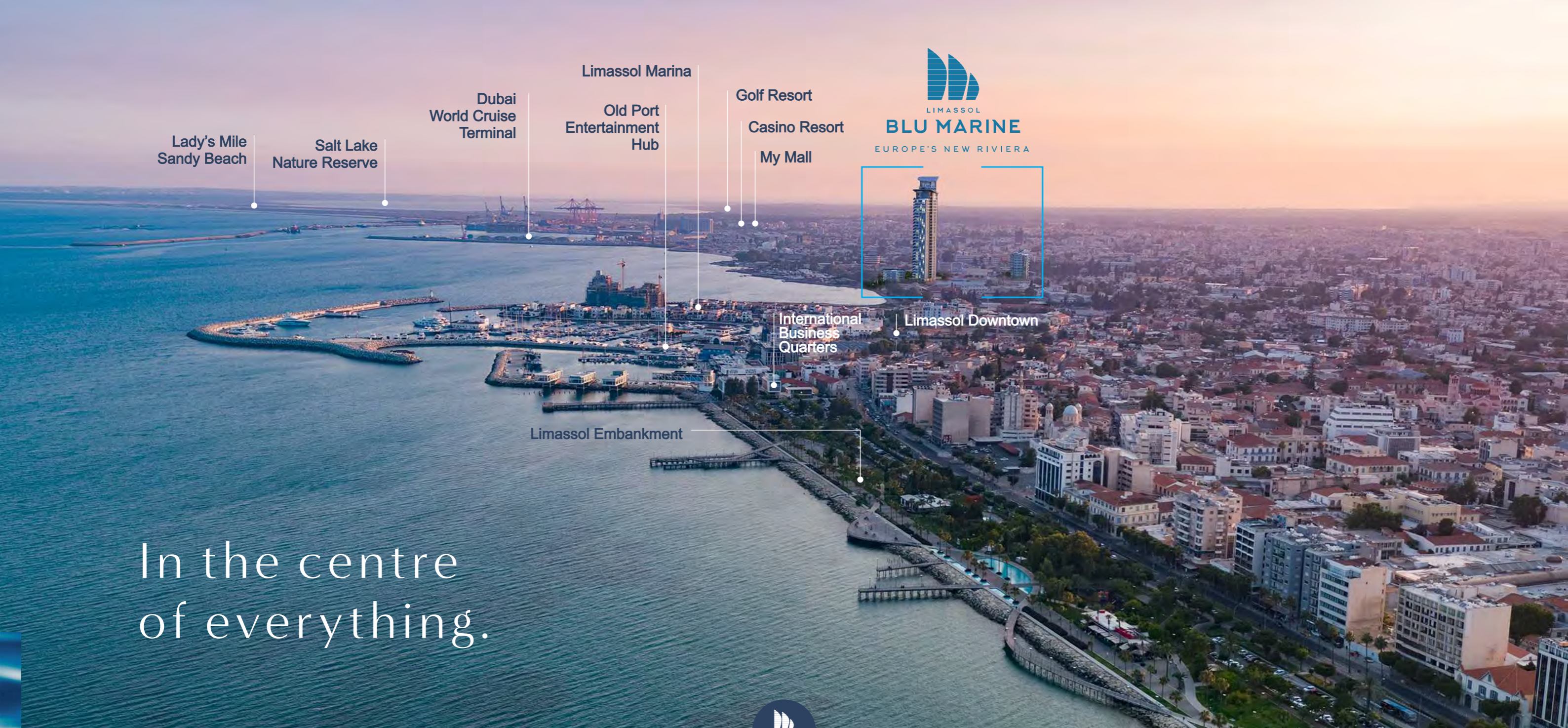
- Designed to become a world-renowned address
- Located in the heart of Cyprus' most thriving cosmopolitan city
- Uninterrupted views of Limassol and the sea
- Top-tier investment opportunity
- World class facilities and second-to-none services



# Affluent City Centre

Beach Destination.





**BLU MARINE**  
EUROPE'S NEW RIVIERA

Lady's Mile Sandy Beach  
Salt Lake Nature Reserve

Dubai World Cruise Terminal

Limassol Marina  
Old Port Entertainment Hub

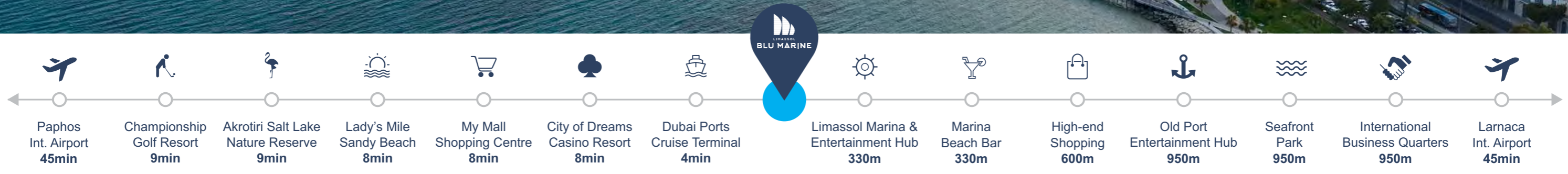
Golf Resort  
Casino Resort  
My Mall

International Business Quarters

Limassol Downtown

Limassol Embankment

In the centre of everything.





# PRELIMINARY Master Plan.

- 1 Poseidon Tower
- 2 Zeus Tower
- 3 Oceanus Tower
- 4 Office Tower
- 5 Main Entrance and Guard House
- 6 Outdoor Swimming Pool
- 7 Residents' Lounge
- 8 Spa and Indoor Swimming Pool
- 9 Public Car Park Entrance
- 10 Green Area
- 11 Children's Playground
- 12 Fountain Pond
- 13 Gymnasium
- 14 Observation Point
- 15 Restaurant
- 16 Bistro
- 17 Drop-off Point
- 18 Podium Level
- 19 Communal Area



LIMASSOL

**BLU MARINE**

EUROPE'S NEW RIVIERA



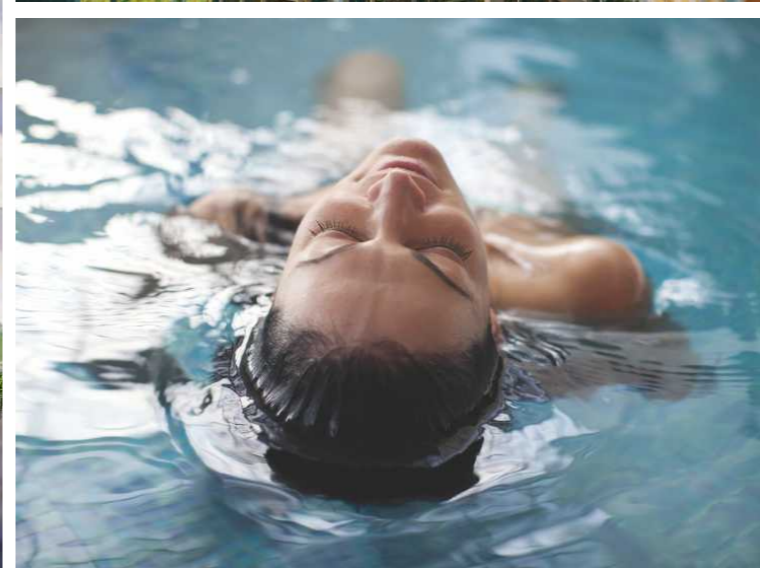
A modern, multi-story building with a curved facade and balconies is shown from a high-angle perspective. The building features large glass windows and balconies with white railings. Each balcony has a small potted tree. The building is set against a backdrop of a vast, calm ocean under a clear sky. The sun is low on the horizon, creating a warm, golden glow over the water. A small boat is visible on the water in the distance. The overall scene conveys a sense of luxury and tranquility.

A high life by the sea.



# World class facilities.

- Luxurious lobby with 24-hour concierge service
- Multi-cuisine bistro
- 50m outdoor seafront swimming pool
- 1,050 sq.m spa
- 25m heated indoor pool
- Male and female steam bath and sauna / massage and treatment rooms
- 200 sq.m double height gymnasium overlooking the sea
- Children's playground
- Landscaped gardens
- Extensive covered and uncovered verandas
- Underground parking / Public parking areas







Luxurious Lobby  
Where interaction is nurtured.

# Elevated Podium Bistro

Exceptional food paired with a unique atmosphere.



# 25m Indoor Pool

Promoting a sense of wellbeing.



# Elevated Podium Gym

With state-of-the-art equipment.



# Living Spaces

Defined by modern-day elegance.







# Luxurious Outdoor Living

Commanding views of the Mediterranean.





Quiet Luxury  
Indulgent spaces in which to retreat.

# Bespoke Bathrooms

Embracing Sophistication and Individuality.





LIMASSOL

**BLU MARINE**

EUROPE'S NEW RIVIERA

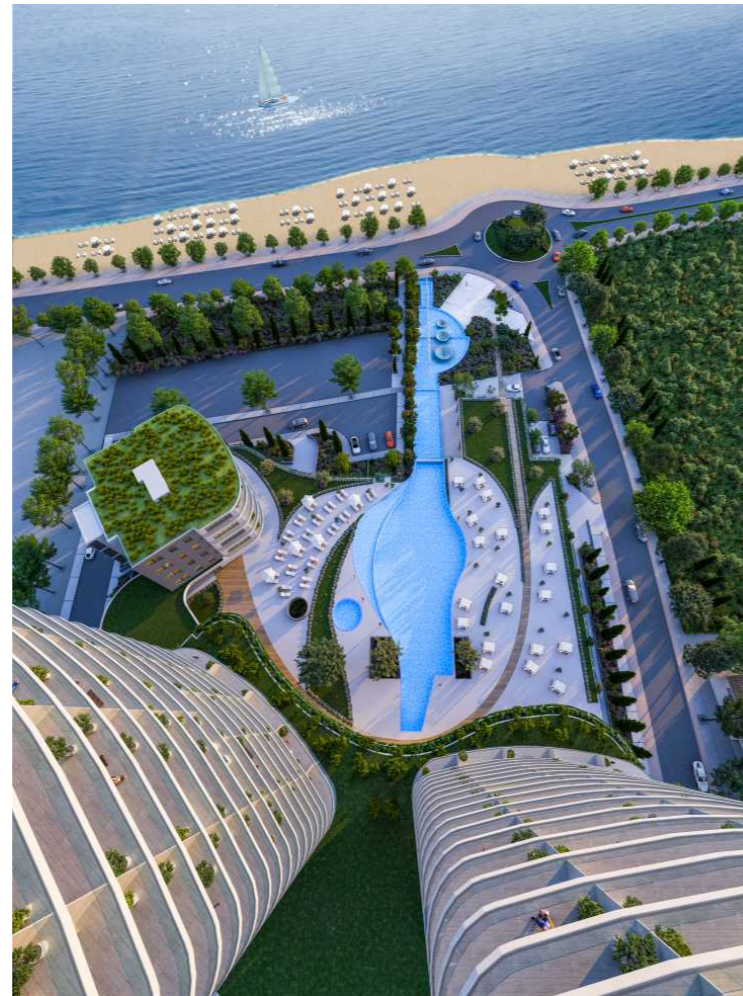
Apartment 1304

3 Bedrooms | Poseidon Tower

Total Covered Area	222.40 m <sup>2</sup>
Internal Area	120.00 m <sup>2</sup>
Covered Veranda	33.00 m <sup>2</sup>
Common Area	69.40 m <sup>2</sup>
Allocated Parking	1

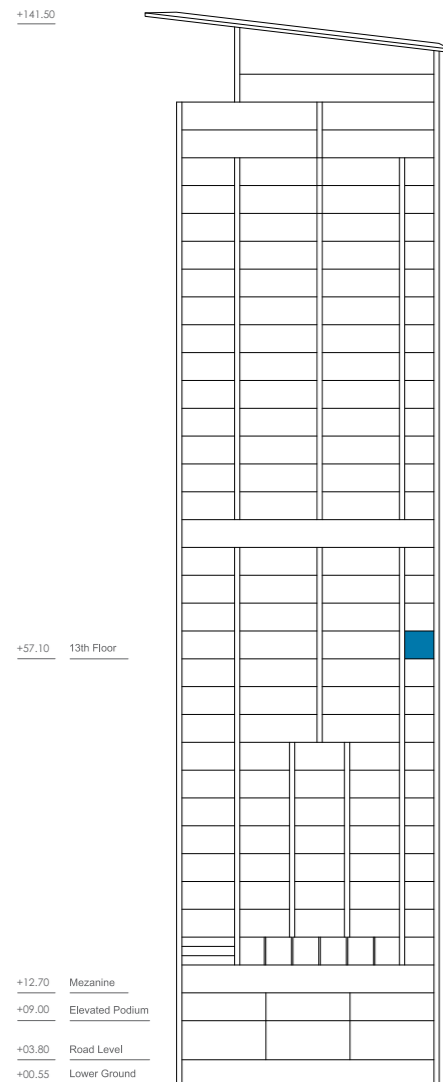


Preliminary Floor Plan



Preliminary Master Plan

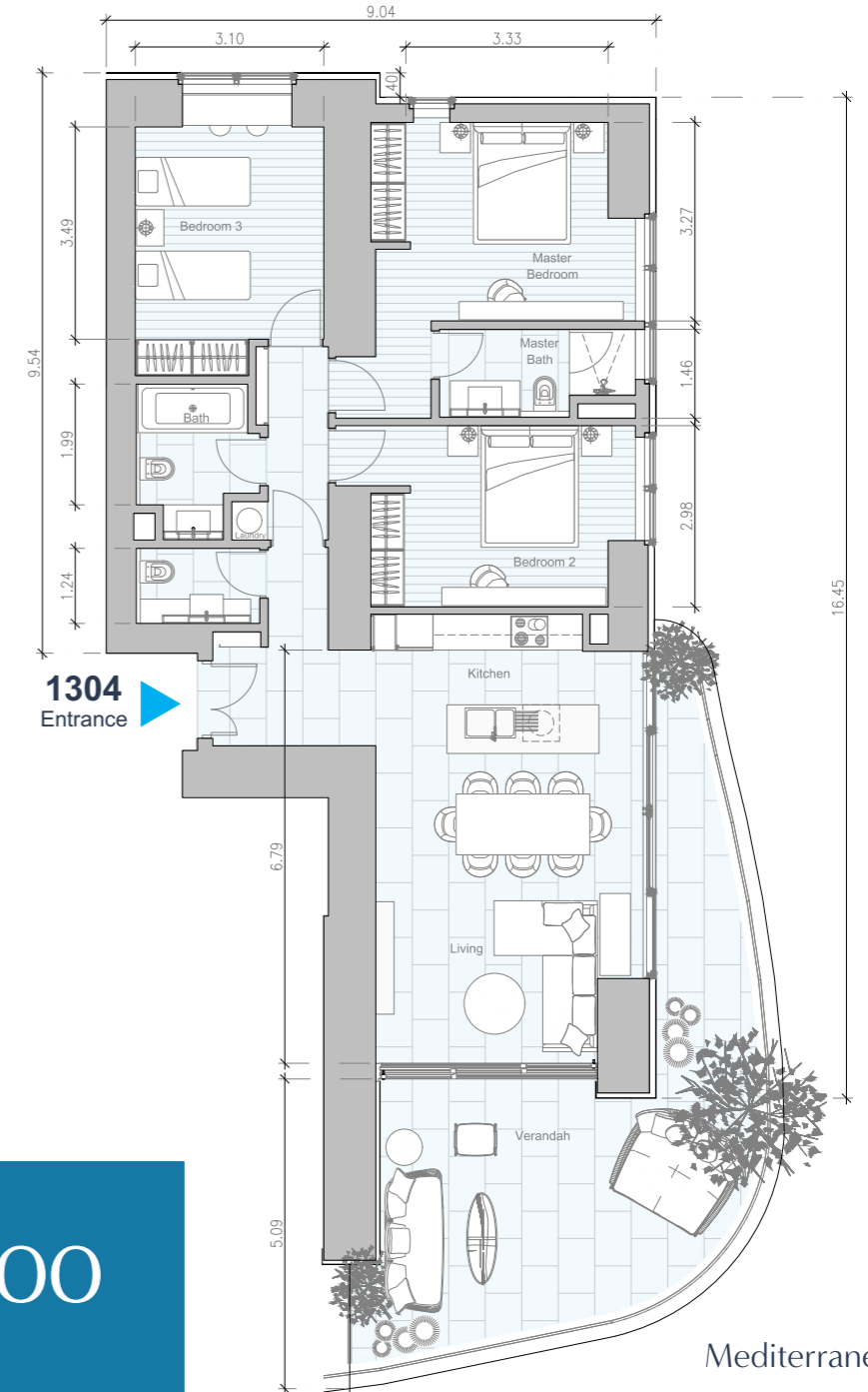
Poseidon Tower



# Apartment 1304 / 3 Bedrooms

## Poseidon Tower

Preliminary Apartment Plan



PRICE  
**€ 1.305.000**  
 (PLUS VAT)

High Rise.  
High Life.



LIMASSOL

**BLU MARINE**

EUROPE'S NEW RIVIERA





LIMASSOL

**BLU MARINE**

EUROPE'S NEW RIVIERA

[www.limassolblumarine.com](http://www.limassolblumarine.com)

The information, plans, photos and artists' impressions contained in this presentation are for guidance purposes only and do not constitute a representation or an offer to treat.  
The Developer reserves the right to effect changes as he may deem appropriate prior to Contract.